

**JHCTECH**



● ● ● ● ● ● ● ● ● ●

Please wait  
5 mins for  
everyone to  
join

If you have time, you  
can follow us on  
LinkedIn first.



# New Product Launch

*Get Started* →

*Speaker*



**Miller Fu**  
Product Manager  
JHCTECH Shenzhen Office



**WPPC-H1520T(P)**  
**Industrial Waterproof Panel PC**

# New Product Launch Announcement

Time	Agenda
16:00 ~ 16:05	<b>Opening</b> Chi Wang, Marketing Manager, Shenzhen Office
16:05 ~ 16: 45	<b>Fearless in Harsh Environments, Empowering the Industrial Future</b> <b>Introducing the WPPC-H1520T(P) Waterproof Panel PC</b> Miller Fu, Product Manager, Shenzhen Office
16:45~ 16:50	<b>Q&amp;A</b>

***JHCTECH***

# **Industrial Waterproof Panel PC WPPC-H1520T(P)**



**IP66/IP69K High Protection Rating  
Stainless Steel Enclosure  
Full-Lamination Touch Panel**

- 01 WPPC Series Roadmap**
- 02 WPPC-H1520T(P) Product Specifications**
- 03 WPPC-H1520T(P) Key Features**
- 04 WPPC-H1520T(P) Target Markets**
- 05 WPPC-H1520T(P) Ordering Info**
- 06 WPPC-H1520T(P) New Product Progress**

# CONTENTS

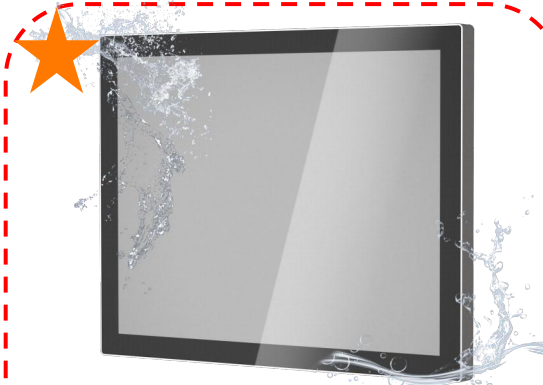
---





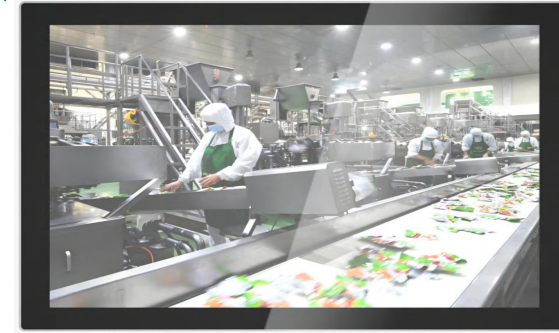
**WPPC-H1020T(P)**

10.1" ↑ <New product>



**WPPC-H1520T(P)**

15.0" ↑ <New product>



**WPPC-H2120T(P)**

21.5" ↑ < IN Design >

Intel® Elkhart Lake

Intel® Twin lake / Tiger lake U

Intel® Tiger lake U

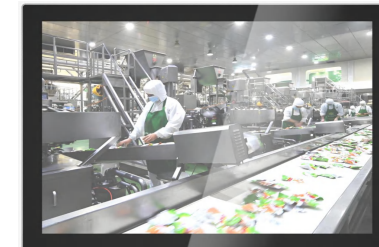
Intel® Meteor Lake CPU

15.6" ↓ <New product>



**WPPC-H1550T(P)**

17.0" ↓ < IN Design >



**WPPC-H1720T(P)**

## WPPC ROADMAP

# ■ WPPC-H1520T(P)

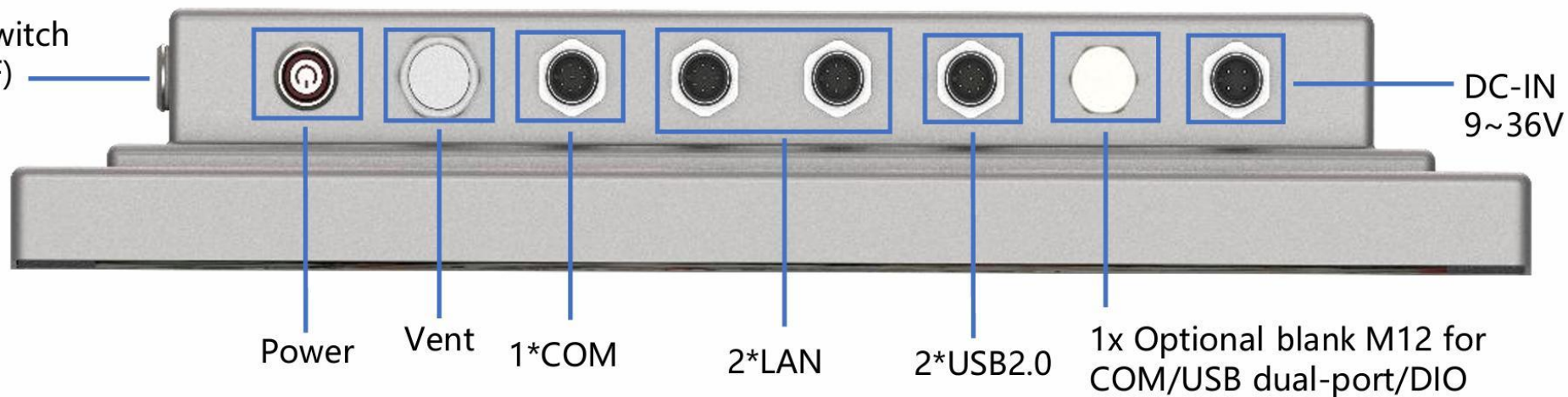


<b>CPU</b>	Intel® Twin Lake / Tiger lake U
<b>RAM</b>	1*DDR5 4800 MHz SODIMM, up to 16GB 1*DDR4 3200 MHz SODIMM, up to 32GB
<b>Storage</b>	1*mSATA, 1*M.2 2280 M-Key NVMe
<b>Display</b>	15" TFT LCD, 1024×768 @60Hz Projected capacitive touch screen
<b>I/O</b>	2*2.5GbE LAN , 2*USB2.0, 1*RS232/422/485,1*optional Blank I/O
<b>Expansion</b>	1*M.2 B-Key3042/3052 w/SIM(for 4G LTE or 5G NR), 1*MiniPCle
<b>Power</b>	DC 9~36V wide-range power input
<b>Construction</b>	SUS 304 stainless steel enclosure Fanless thermal design
<b>IP Rating</b>	Full IP66/IP69K protection M12 waterproof connectors
<b>Mounting</b>	Standard 100×100 mm VESA mount

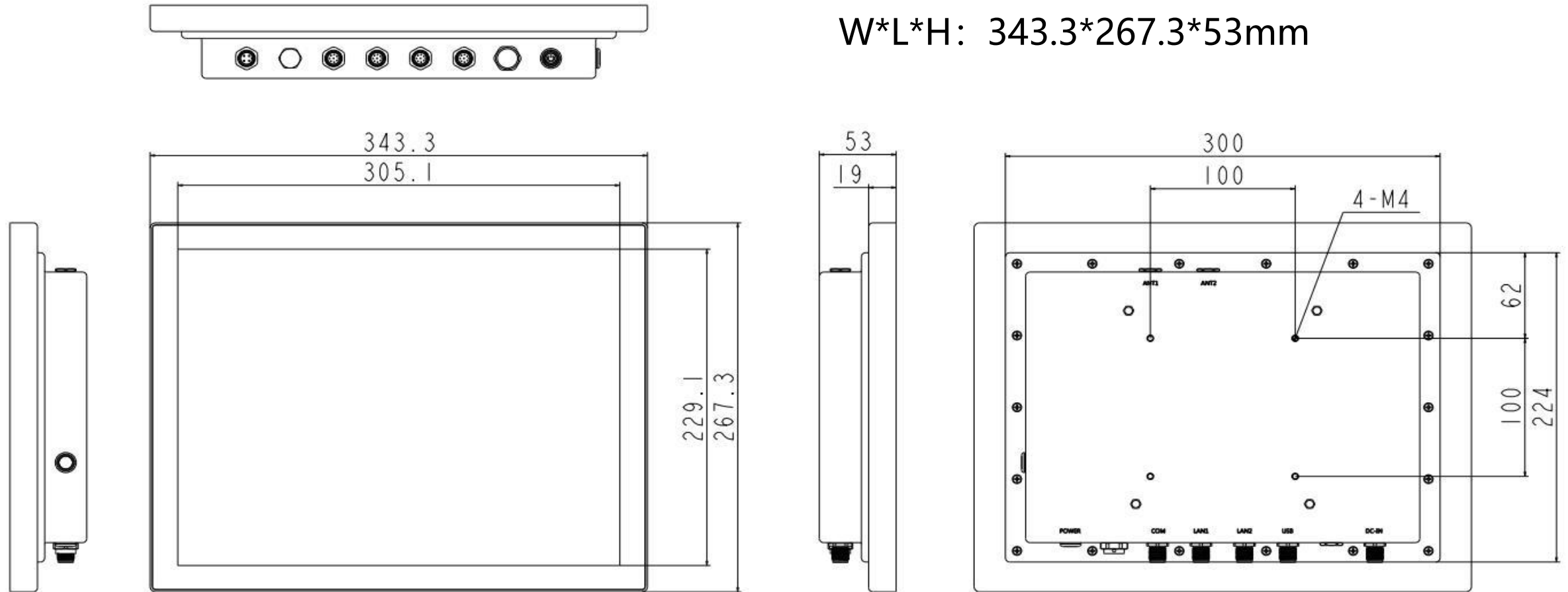
# ■ WPPC-H1520T(P) I/O Overview



Touch Switch  
(ON/OFF)



# ■ WPPC-H1520T(P) Dimension Diagram



# WPPC-H1520T(P)

## Product Highlights

- ★ **Powered by the new-gen Intel® x86 low-power platform**
- ★ **Optical bonding with AF nano hydrophobic coating**
- ★ **Narrow bezel design with 304 stainless steel construction**
- ★ **M12 waterproof connectors with conformal-coated PCB**
- ★ **IP66/IP69K-rated for superior protection**



- 1 Intel Twin lake/Tiger lake CPU**  
*Low power consumption and strong openness, supporting Windows and Linux operating systems*
- 2 Optical bonding & AF coating**  
*OCA bonding eliminates air gaps; AF coating resists fingerprints and oil*
- 3 Narrow-bezel design with 304 stainless steel enclosure**  
*The narrow-bezel screen design offers a sleek appearance, while the stainless steel enclosure ensures a robust structure.*
- 4 M12 waterproof connectors and conformal-coated PCB**  
*Thread-locking structure for waterproof and dustproof protection*
- 5 IP66/IP69K-rated for superior protection**  
*Suitable for extreme conditions with corrosion resistance, splash protection, and high-temperature, high-pressure tolerance.*

## ★ Powered by the new-gen Intel® x86 low-power platform

### Intel Twin lake / Tiger Lake U CPU

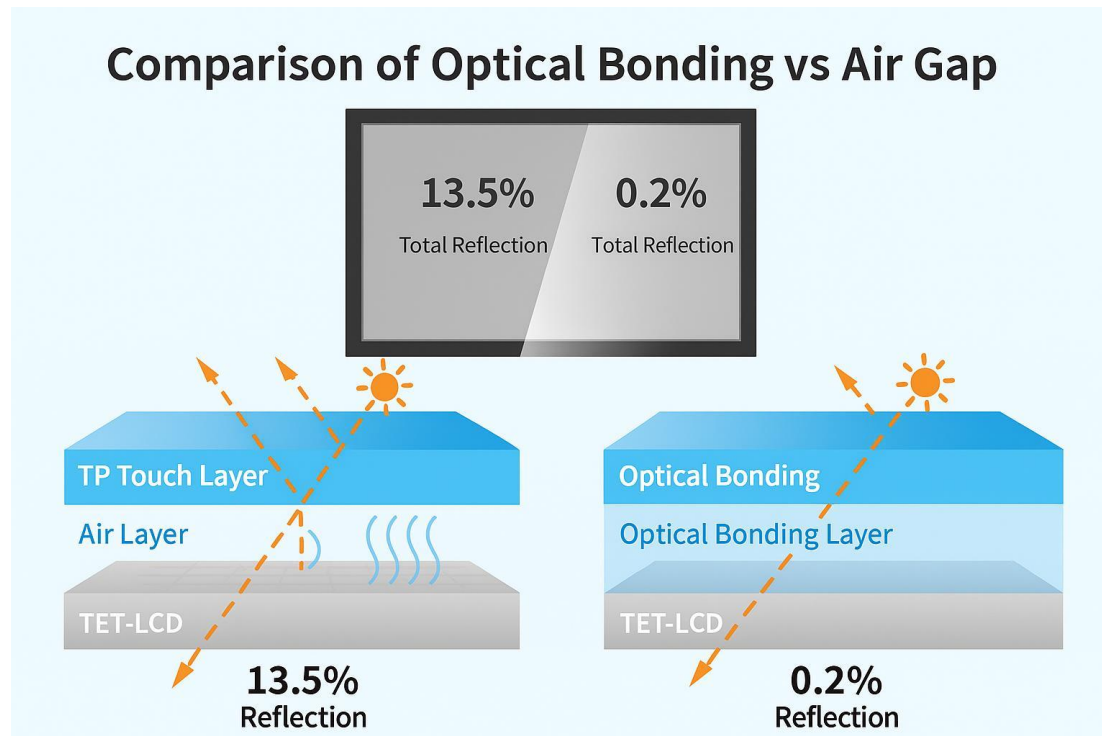
Equipped with Intel's latest **Twin Lake N150 processor** built on the **Intel 7 process**, offering **4 cores, 4 threads**, and up to **3.6 GHz turbo boost**. It achieves up to **33% higher multi-core performance** (Cinebench R23) and **11% better graphics performance** (3DMark) than the previous **Alder Lake-N N100**.



Intel Twin lake	Tiger Lake U
★ N150	Core i3-1115G4
	Core i5-1135G7
	Core i7-1165G7

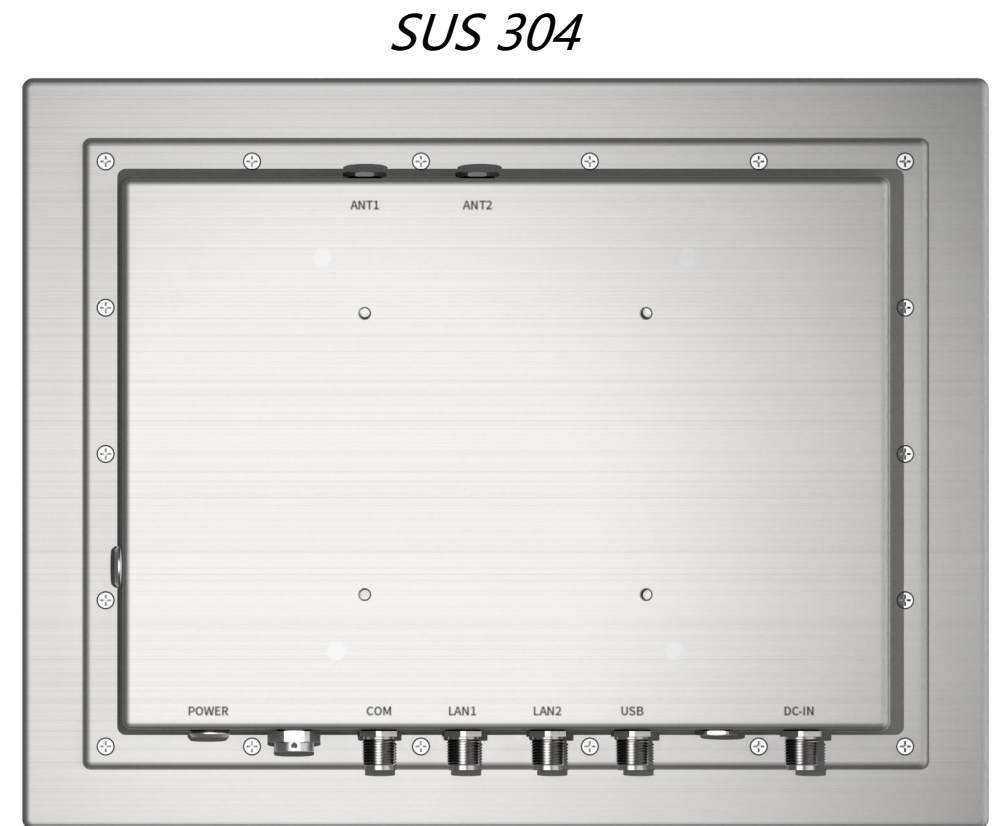
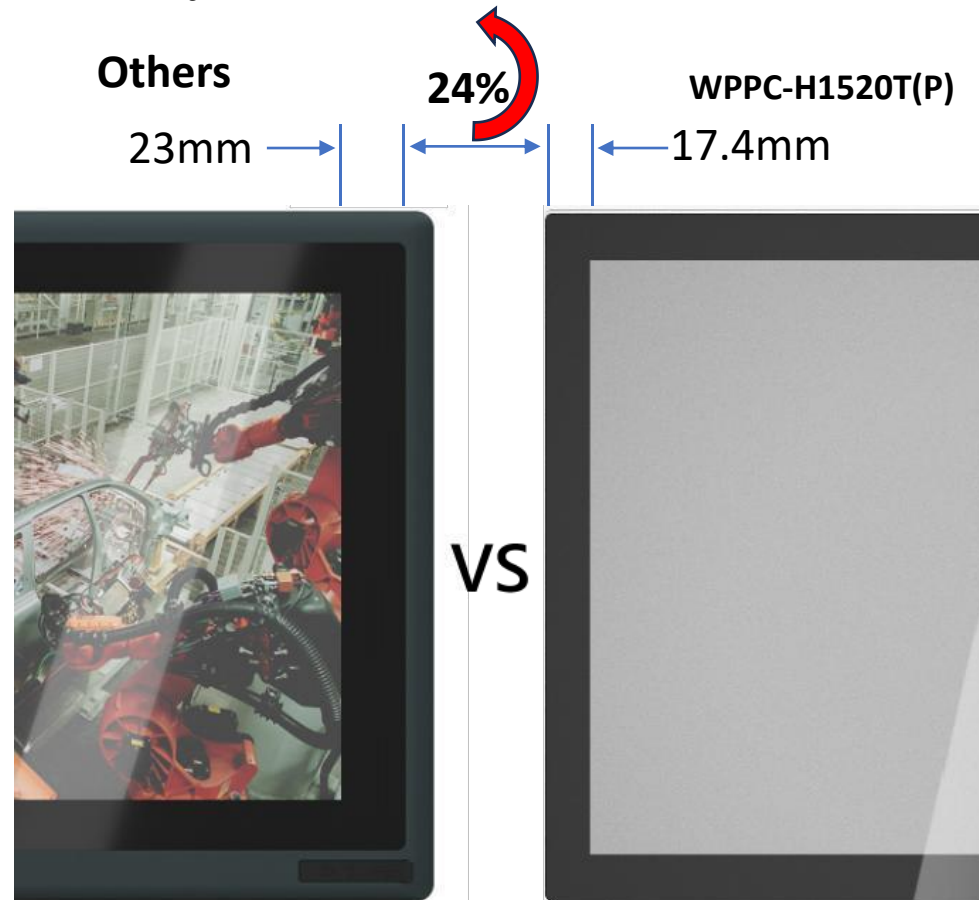
## ★ Optical bonding with AF nano hydrophobic coating

- 1) The touch display adopts **OCA optical bonding technology**, eliminating air gaps to effectively reduce screen reflectivity and enhance display performance.
- 2) The cover glass features an **AF (anti-fingerprint) coating**, providing resistance to fingerprints and oil, allowing water droplets to glide smoothly without accumulating on the screen.



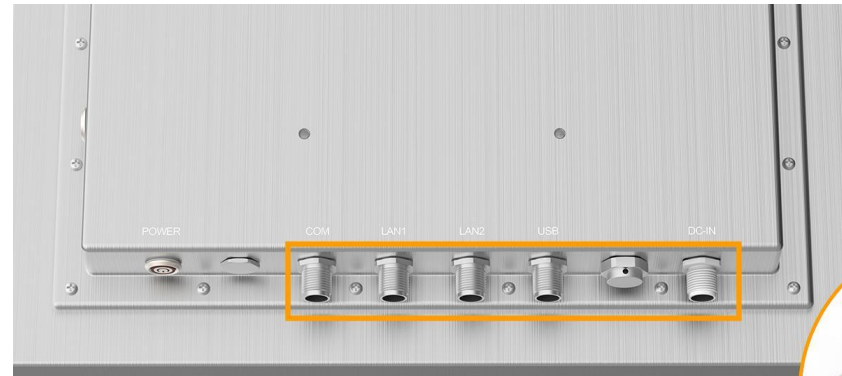
## ★ Narrow bezel design with 304 stainless steel construction

The narrow-bezel screen design offers a more elegant appearance, while the SUS 304 stainless-steel body provides a robust structure that is corrosion-resistant and easy to clean.

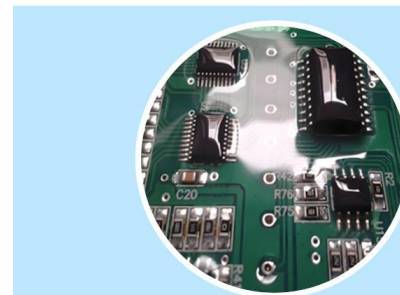
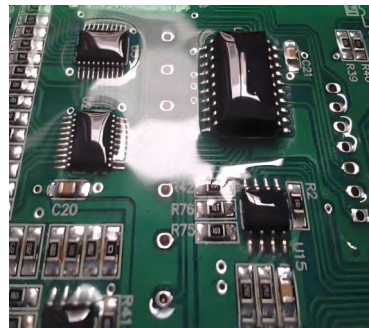


## ★ M12 waterproof connectors and PCB conformal coating

1. M12 industrial connectors provide waterproof, dustproof, vibration-resistant, and shock-resistant protection.
2. The PCB conformal coating forms a transparent protective film that effectively insulates and protects circuits from chemicals, moisture, and other contaminants.



**Industrial-Grade Protection Design**



**PCB Conformal Coating**

Effectively insulates and protects circuit boards



**M12 Industrial Connectors**

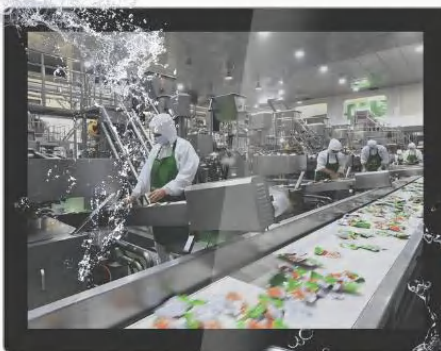
[According to the national standard GB/T 4208-2017 "Degrees of Protection Provided by Enclosures (IP Code)" (identical to international standard IEC 60529:2013, IDT)]

Dustproof Waterproof

# IP??

IP **Dustproof** and **Waterproof** **Dustproof**  
Protection Rating

WPPC-H1520T(P)



IP66/IP69K Ultra-High  
Protection Rating

IP —

## IP - Ingress Protection

An internationally recognized protection rating certification

The IP rating consists of two digits: the first indicates the level of protection against dust, and the second indicates the level of protection against water.

The higher the number, the greater the degree of protection.

- |  |  |
|--|--|
| 1 Prevents the ingress of solid objects larger than 50 mm    | 4 Prevents the ingress of solid objects larger than 1 mm.              |
| 2 Prevents the ingress of solid objects larger than 12.5 mm. | 5 Prevents the ingress of dust in quantities sufficient to cause harm. |
| 3 Prevents the ingress of solid objects larger than 2.5 mm.  | 6 Completely dustproof   |

Waterproof —

- |   |  |
|---|--|
| 1 Prevents the ingress of vertically falling water drops.             | 6 High-pressure water jets directed in any orientation         |
| 2 Prevents the ingress of water when tilted up to 15 degrees.         | 7 Operates normally when immersed in water up to 1 meter deep. |
| 3 Prevents the ingress of water sprayed at angles up to 60 degrees.   | 8 Operates normally when submerged deeper than 1 meter.        |
| 4 Prevents the ingress of water splashes from any direction           | 9K Supports high-pressure and steam jet cleaning.              |
| 5 Prevents the ingress of low-pressure water jets from any direction. |  |

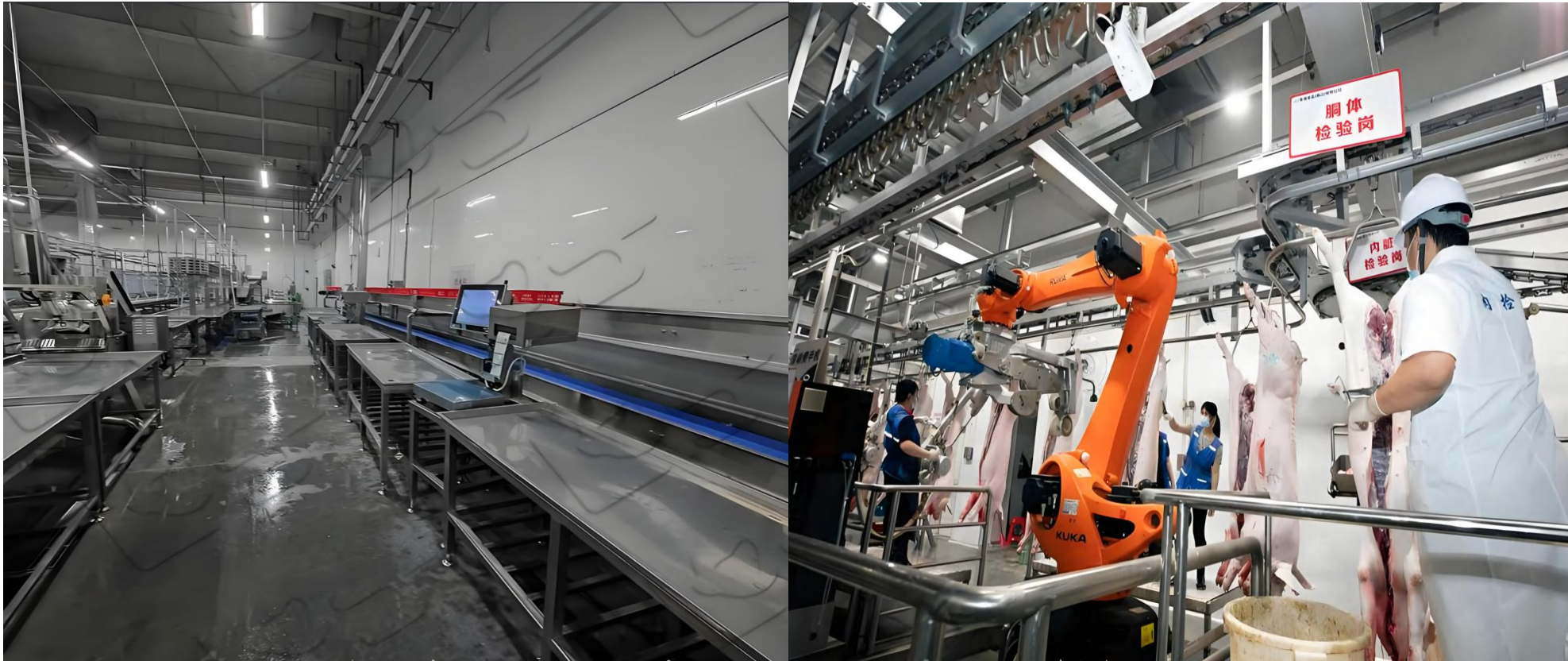
Choosing products with protection ratings can extend their service life while reducing risks and damage rates.

★ **IP66/IP69K  
Ultra-High  
Protection  
Rating**

# Market Direction

01

**Food Processing Industry:** Monitoring of meat slaughtering and processing production lines, and control of filling equipment on-site.



*In the production, processing, and packaging of meat, food, and beverages, equipment must be frequently cleaned and disinfected to meet strict hygiene standards.*

02

**Pharmaceutical and Chemical Industry:** Sterile equipment control workshops and production line quality inspection data collection workshops.



*During pharmaceutical production, automated control of dust-free equipment is implemented for tasks such as formulation management and production batch record tracing. Equipment must operate in environments where it is protected from corrosion caused by drugs or chemical solvents.*

# Market Direction

03

**Marine and Port Industry:** Monitoring equipment for port and dock cranes, and human-machine interface displays for ship navigation and equipment data collection on-site.



*Freight operators at ports and docks use specialized equipment to display loading and unloading instructions and prevent cargo ship delays. The equipment must be resistant to salt spray corrosion and capable of operating in humid environments.*

# ■ WPPC-H1520T(P) Ordering Info



Model NO.	CPU	TOUCH	Description
WPPC-H1520T(P)/N150	Intel® Processor N150	Projected capacitive multi-touch	15" XGA Stainless Steel Panel PC, 1*COM, 2*LAN, 2*USB2.0, 1*Optional M12 I/O blank (2*USB/1*COM/DIO), 1*Mini PCIe, 1*mSATA, 1 *M.2 2280 M-Key, 1*M.2 B-Key, DC 9~36V
WPPC-H1520T(P)/I3	Intel® Core i3-1115G4		
WPPC-H1520T(P)/I5	Intel® Core i5-1135G7		
WPPC-H1520T(P)/I7	Intel® Core i7-1165G7		
M12-PWR-DC12	AC/DC power adapter, DC12V@5A ,60W 180CM		
M12-USB180A	USB cable M12-8P-F/2*A type 180CM		
M12-LAN180R	LAN cable M12-8P-F/RJ-45 plug CAT6 180CM		
M12-COM180D	RS-232 cable M12-8P-F to DSUB 9M 180CM		

# ■ WPPC-H1520T(P) Ordering Info for accessories



M12-Power	AC/DC power adapter, DC12V@5A ,60W 250CM
-----------	--



M12-LAN	LAN cable M12-8P-F/RJ-45 plug CAT6 180CM
---------	--



M12-USB	USB cable M12-8P-F/2*A type 180CM
---------	-----------------------------------



M12-COM	RS-232/485 cable M12-8P-F to DSUB 9M 180CM
---------	--



## M12 Cable Installation

# ■ WPPC-H1520T(P) New Product Progress



**WPPC-H1520T(P)  
Mass Production Schedule:**

---

**Mid-December 2025**

---

# Live Demo Video of WPPC-H1520T(P)





Q&A

**Q1:** Does this waterproof PC support multiple installation methods?

**A1:** Now, it only supports the VESA installation method. If customers require support for alternative installation methods, they can contact us to customize different brackets for secure fixation.

**Q2:** If my customer wants to use it in an outdoor environment, are there any specific considerations to be aware of?

**A2:** If the customer needs to use it outdoors, I suggest avoiding direct sunlight as much as possible, as this can cause the equipment to overheat. However, we can customize professional high-brightness display screens and insulated glass layers for customers. Afterwards, I think you can use it well outdoors.



## Stay in Touch



JHC Technology Development Co.,Ltd.



@ Shenzhen JHC Technology  
Development Co., Ltd.



@JHCTECH



Website



YouTube



LinkedIn

## CONTACTS

### Marketing Department

[marketing@jhctech.com.cn](mailto:marketing@jhctech.com.cn)

[sales@jhc-technology.com](mailto:sales@jhc-technology.com)

### Product Manager

[fuxiang@jhctech.com.cn](mailto:fuxiang@jhctech.com.cn)



[www.jhctech.com.cn](http://www.jhctech.com.cn)